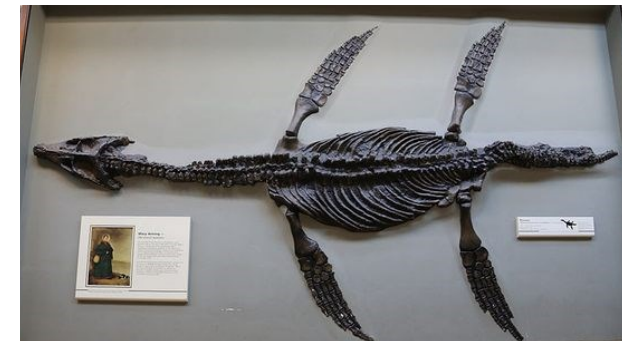


Key Facts:

- Dinosaurs were a diverse group of reptiles that lived between 250 million and 65 million years ago.
- Scientists call this period the Mesozoic Era, dividing it into the Triassic, Jurassic and Cretaceous.
- Dinosaurs lived many years before the first modern humans appeared.
- Dinosaur fossils have been found all over the world.
- Some dinosaurs were meat eaters and were called carnivores.
- Most dinosaurs were plant eaters and were called herbivores.
- The Cretaceous-Paleogene extinction event. Dinosaurs are believed to have become extinct 66 million years ago in an event that eliminated many animal species. It is commonly thought to have been caused by an asteroid hitting Earth.

Significant Individual: Mary Anning**Born:** 21st May 1799**Died:** 9th March 1847

Mary Anning was born in Lyme Regis. She was a famous fossil hunter and collector who identified many prehistoric fossils from the time of the dinosaurs. Mary made her first major discovery at the age of only 12—a 5.2 metre long skeleton of an ichthyosaurus. In 1823 she made another important discovery, that of a plesiosaur. She also discovered many dinosaur species.



When dinosaurs lived this was called the **Mesozoic Era**. This is divided into the following periods:

Triassic Period
250-200 million
years ago



Jurassic Period
200-145 million
years ago



Cretaceous Period
145-65 million
years ago



Present Day
Now



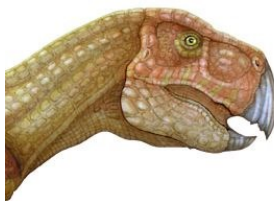
Key Vocabulary

Dinosaur	The word means 'terrible lizard'.
Palaeontologist	A scientist who studies animal and plant fossils.
Fossil	The remains of a prehistoric animal or plant.
Prehistoric	The time before written records.
Extinct	An animal or plant species that has died out and no longer exists.
Period	A length of time.

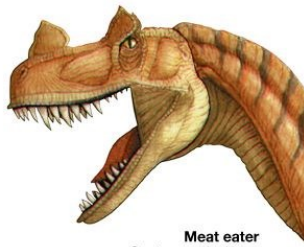
Some dinosaurs were carnivores. They had sharp teeth to cut and tear meat. The teeth of herbivores were flat to allow them to chew plants.

Plant eater

Psittacosaurus had a large parrotlike beak for tearing off and eating hard plant material.



© 2014 Encyclopædia Britannica, Inc.



Meat eater

Ceratosaurus had large blade-like teeth for slicing meat.



HOW HUMANS SIZE UP TO THE DINOSAURS FROM JURASSIC PARK

